

NOVEMBER 28TH NOVEMBER

SOUTHFIELD PARK

NEWSLETTER



Dear families

It will be December next week and, in school, Christmas is definitely upon us. The Friends kicked the festivities off last week with the most fabulous Christmas Fair, with craft, games, face painting and plenty of food! It was so lovely to see so many of you there. Thank you to everyone who ran a stall, contributed a jolly jar, became an elf, ran the Hoover around... etc etc etc, but huge praise and thanks must go to the Friends who worked so hard in the lead up to the event, and for at least 8 hours on the day.

The stage has gone up in hall this week and Christmas performance rehearsals are in full flow. Performances details can be found in the dates list below – you are all in for a treat!

There was a strong turn out for parent consultations this week. Thank you for taking the time to talk to the teachers about your children's progress this term. We had a very good response at the launch of the Home School Agreement at parent consultations. If you missed it, more details can be found below.

Mrs Sally Smith

Dates for your diary...

Mon 8th Dec

- Year 2 and Year 3 Christmas Performance to Year 3 parents - 9.15am

Tues 9th Dec

- Year 2 and Year 3 Christmas Performance to Year 2 parents - 9.15am

Wed 10th Dec

- EYFS and Year 1 Christmas Performance to Reception parents - 9.15am

Thur 11th Dec

- EYFS and Year 1 Christmas Performance to Year 1 parents - 9.15am

Tues 16th Dec

- Phase 3 rehearsals at the Church - 10am

Wed 17th

- Christmas Lunch and KS2 Party afternoon – party wear or Christmas jumper

Thurs 18th Dec

- Phase 3 Carol Concert at the Church - 10am
- EYFS and KS1 Party afternoon – party wear or Christmas jumper

Fri 19th Dec

- Christmas Panto for the children

Fri 19th Dec

- Break up for Christmas Holidays - 1.30pm



- **Home School Agreement**

This week, at parent consultation evenings, we launched our new Home School Agreement. It outlines what you can expect from us as a school and what, in return, parents and carers need to do to both support us and fulfil their legal responsibilities. There is also a section about children's behaviour, which many parents have asked to have available to talk to their children about at home. You can find a copy on the school website: [Southfield Park Primary School - Home School Agreement](#)

The Agreement also outlines expectations for parental conduct:

Parental Conduct

For our Home School Agreement to work and help to ensure the best outcomes for our children, everybody needs to respect the professional relationships required in schools.

Our staff work to the highest expectations of professional conduct and are held to account should their behaviour fall short of our expectations.

We therefore ask that all parents frame questions and concerns in a calm and respectful manner to prevent parental behaviour becoming an issue in itself.

- **Parent Governor Elections**

We currently have two parent governor vacancies on our Local Governing Body. I wrote to the parent body on Monday 17th November with details regarding the process for nominations and the timeline for the procedure. If you are keen to see the school develop and contribute to the local community, we would love to receive your nomination. If you wish to stand for election, please return your completed form to the School Office **by noon on Monday 1st December 2025**.

- **Lumen Learning Trust Seminars**

This week, our teachers spent Wednesday evening working with their year group colleagues across the seven schools of the Lumen Learning Trust. Once again, this proved to be a useful session to share expertise and work together in a supportive and effective way.

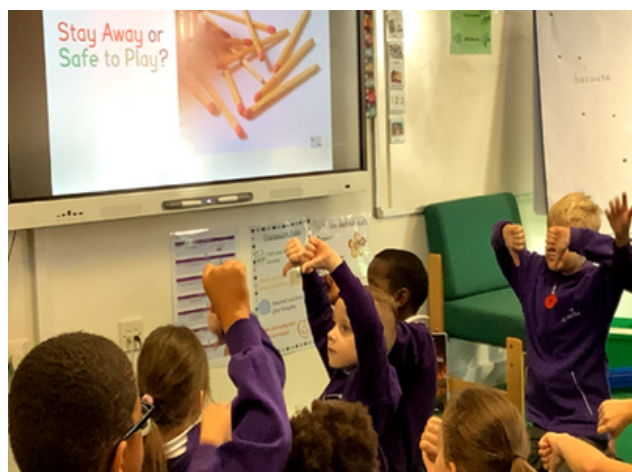
- **Reception Police Visit**

On Wednesday 26th November the police visited Reception to help us learn about people who help us in our community. They talked about their important job of keeping everyone safe and explained how they help when someone is lost, hurt, or needs protection. We even got to see some of their equipment and ask questions about their work. It was an exciting visit that helped us understand how the police care for and support our community every day.



- **Year 2 Fire and Rescue safety visit**

On Wednesday, Jen from Surrey Fire and Rescue came to deliver a talk to Year 2 about fire safety. She started by talking about the Great Fire of London and the differences between modern London and London in 1666. Jen was very impressed with how many facts the children were able to tell her about the fire. The children found out all about the work firefighters do including, putting out fires and saving animals who are trapped. We then ordered pictures to show what we must do in the event of a fire and role played a telephone conversation calling for help. We all now feel very confident in dealing with a fire emergency!



- **Carol Concert Years 4, 5 and 6**
Year 4, 5 and 6 will be performing our Christmas Performance at Christ Church, Epsom Common on **Thursday 18th December**.



Mrs Becky Newman, our KS2 Lead, is requesting assistance from adult volunteers to aid our safe walk to the church for the rehearsal and the performance. Could you help between **9am and 12:00pm on Tuesday 16th (which is our rehearsal) and Thursday 18th December (for the performance)?**

If you, or a member of your family, are able to help, we would be very grateful for your support as we come together for this wonderful event.

You do not need to hold a DBS with the school.

Please reply to the school office at info@southfield-park.surrey.sch.uk to confirm your offer to help by **Friday 5th December**.



Thank you in advance for your time and support!

- **Consultation on Admissions Arrangements**
I have written to the local community today, on behalf of the Lumen Learning Trust, to outline the proposed arrangements for admission to Southfield Park Primary School in September 2027. More information can be found in today's email and on the school's website. A six-week consultation period will now run from today, Friday 28th November 2025 until Friday 9th January 2026.

● **Message from Lumen Learning Trust's Chair of Directors: Consultation on admission arrangements for Southfield Park Primary School, Long Grove Rd, Epsom KT19 8TF.**

On behalf of The Lumen Learning Trust Board of Directors, we wish to make our families aware that we are planning to amend the admission criterion for our school, effective from September 2027. Full details of the consultation can be found on our school website here: [Southfield Park Primary School - Consultation: Admissions Arrangements](#) and we attach the proposed admissions policy and supplementary information form.

[Appendix 1 Southfield Park Primary School Supplementary Information Form](#)

[Admission Arrangements for Southfield Park Primary School 2027/28](#)

Why we are consulting

In accordance with the Schools Admissions Code Guidance, the school is required to consult with you if we intend to make a change. The changes being proposed are as follows:

1. Removal of 'Exceptional/social medical need' as a criterion within the admission arrangements.

Schools are not required to have a priority/criterion for exceptional circumstances within their oversubscription criteria, in accordance with the Schools Admissions Code Guidance. The Directors believe this criterion can be subjectively applied on appeal and for transparency, plan to remove it from the admissions policy oversubscription criterion. Common medical conditions and allergies can usually be supported in all mainstream schools. It is believed for those pupils with special educational needs and other vulnerable pupils, there are alternative routes for them to gain a place at the school.

2. Removal of 'Children living in the defined catchment area of the school' as a criterion within the admission arrangements.

Schools are not required to have a priority/criterion for a catchment area within their oversubscription criteria, in accordance with the Schools Admissions Code Guidance. As such the Directors plan to remove this criterion. The distance to school from an applicant's normal place of residence is used when ranking applications within each criterion from shortest distance to longest.

3. Reduction of the number of location markers to determine distance from school to a single marker.

Schools are not required to have more than one location marker to determine distance from school, in accordance with the Schools Admissions Code Guidance. If within any criterion there are more children than places available, any remaining places will be offered to children who meet the criterion on the basis of proximity of the child's home address to the school, with children living nearest receiving the greater priority. The Directors believe that having a single location marker will offer clarity to applicants and provide accuracy when determining proximity. The location marker applied will be the front entrance gate on Long Grove Road.

Next steps

The six-week consultation period will run from Friday 28th November 2025 to Friday 9th January 2026. If you would like to comment on the proposed arrangements, please action either of the following by latest Friday 9th January 2026:

- Complete the consultation online response form via <https://forms.gle/p9h1CZ6foHz5n7WFA>
- Write to the Chair of the Directors at the following address: Chair of Directors, Lumen Learning Trust, c/o Saxon Primary School, Briar Road, Shepperton TW17 0JB.

If you do not have online access and you wish to request a printed copy of the admissions arrangements and a response form, please contact the Office Manager at Southfield Park Primary School (info@southfield-park.surrey.sch.uk).

After the closing date, responses will be collated and presented to Board of Directors. Once determined the final admission arrangements will be placed on our school website at [Southfield Park Primary school website](#).

Yours sincerely

Jo Roberts

Chair of Directors

 **Christmas Card Post Boxes Opening Soon!**

We are delighted to announce that our Christmas Card post boxes will be opening on **Monday 1st December**. Our wonderful Year 6 elves will be busy helping to sort and deliver the cards to the correct classes.

To help them with their important job, please ensure that each card has the child's full name and class clearly written on the front. This will help us make sure every card reaches the right person.



Thank you for your support in spreading festive cheer throughout the school!



Midday Meal Supervisor

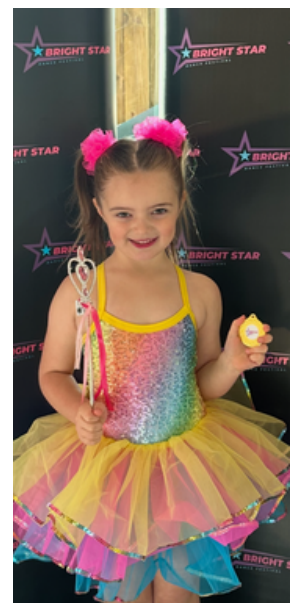
We currently have an exciting job opportunity available at our school.

If you—or someone you know—are looking to make a difference in a warm and welcoming school environment, take a look at our current vacancies:

If you're interested or would like more information, please use the QR code or visit our school website. We'd love to hear from you!



Congratulations to Hallie who showcased her talents at a four-day dance competition in Farnham, bringing home three first-place awards: Vocal Music Theatre Solo, Modern Duet, and Cabaret Trio. A remarkable sweep—well done, Hallie!





Stars of the week

RC

Star of the week: **Molly**

RF

Star of the week: **Zacharie**

Year 1 HM

Star of the week: **Illiyeen**

Year 1 CR

Star of the week: **Hallie**

Year 2 GR

Star of the week: **Ayda & Seb**

Year 2D

Star of the week: **Jude**

Year 3F

Star of the week: **Jenni**

Year 3A

Star of the week: **Hailey**

Y4 K

Star of the week: **Matilda & Mark**

Year 4J

Star of the week: **Zachary**

Year 5BS

Star of the week: **Elly**

Year 5S

Star of the week: **Ella**

Year 6N

Star of the week: **William**

Year 6C

Star of the week: **Harmony**



28 NOVEMBER 2025

FRIENDS@SOUTHFIELD-PARK.SURREY.SCH.UK



News From The Friends



NOVEMBER 28TH 2025

- **Term Dates 2025-26**

Autumn term 2025

Start of term: Wednesday 3rd September 2025

INSET days: 2nd and 3rd September (school closed to children)

Thursday 4th September 2025 – first day for children

INSET day: 24th October (school closed to children)

Half term break: 27th October to 31st October 2025

End of term: Friday 19th December 2025 (school closes at 1:30pm)

Spring term 2026

Start of term: Monday 5th January 2026 (children in school)

Half term break: 16 February to 20 February 2026

End of term: Friday 27th March 2026 (school closes at 1:30pm)

Summer term 2026

Start of term: Monday 13th April 2026

Half term break: 25th May to 29th May 2026

End of term: Friday 17th July 2026 (school closes at 1:30pm)

INSET DAYS (made up earlier in the year) 20th, 21st and 22nd July 2026 (school closed)

- **Term Dates 2026-27**

Autumn Term 2026

INSET days: 1st and 2nd September (school closed to children)

Start of term: Thursday 3rd September 2026 (children return to school)

Half term break: Monday 19th to Friday 30th October 2026 (**two weeks**)

End of term: Friday 18th December 2026 (school closes at 1:30pm)

Spring Term 2027

INSET days: Tuesday 5th Jan (school closed to children)

Start of term: Wednesday 6th January 2027 (children return to school)

Half term break: Monday 15 February to Friday 19 February 2027

End of term: Thursday 25th March 2027 (school closes at 1:30pm)

Summer Term 2027

Start of term: Monday 12th April 2027

Half term break: Monday 31st May to Friday 4th June 2027

End of term: Tuesday 20th July 2027 (school closes at 1:30pm)

INSET days: Wednesday 21st and Thursday 22nd July 2027 (school closed)

Autumn Term 2025 Dates

Date	Time	Event
Tues 2nd & Wed 3rd Sept	8:30	INSET days (school closed to children)
Thu 4th Sept	8:35	First day of term for Years 1-6 Reception story and play am or
Fri 5th Sept	AM/PM	Reception groups am/pm
Mon 8th Sept	Various	Clubs start
Mon 8th Sept	AM	Reception children in and home at 12pm
Tues 9th Sept	AM	Reception children in and stay for lunch (home at 12:30pm)
Tues 9th Sept		Mindworks Workshop with Year 5
Wed 10th Sept	AM	Reception children in and stay for lunch (home at 12:30pm)
Wed 10th Sept	9 – 9:30 am	Meet the Teacher (yr1 – 6)
Thur 11th Sept		Reception in full time
Mon 15th Sept	9:15am	Prospective Parent tour
Tues 16th Sept		Mindworks Workshop with Year 5
Tues 16th Sept	After school	Pre-loved uniform sale
Wed 24th Sept	9am and 5:30pm	Reception Parents Phonics and Early Reading Information
Wed 24th-Fri 26th Sept		Year 4 Sayers Croft Residential

Autumn Term 2025 Dates

Date	Time	Event
Monday 29th and Tue 30th		Individual photos
Fri 3rd Oct	9:15am	Prospective Parent tour
Fri 3rd Oct		Christmas Card artwork sent home
Fri 10th Oct		World Mental Health Day
Sat 11th Oct	10am – 12pm	Prospective Reception Stay and Play
Mon 13th		Flu immunisations
Mon 13th – Fri 17th Oct		International Week
Fri 17th Oct	6 – 8pm	Family Bingo Night
Tue 14th Oct	9 – 9:30am	Open Classrooms (All)
Tues 14th – Fri 17th Oct		Harvest Collection for the Food Bank
Mon 20th Oct	9:15am	Prospective Parent tour
Wed 22nd Oct	5:30pm	Early Maths Parent Meeting for Reception and KS1 parents
Thur 23rd Oct	End of school	Break up for half term
Fri 24th Oct		INSET Day (school closed to children)

Half Term Mon 27th Oct- Fri 31st Oct		
Mon 3rd Nov	8:35am	Children return to school
Fri 7th Nov		Anti-Bullying Day
Fri 7th Nov		Crazy Hair Day in exchange for Christmas hamper donations
Week of 10th Nov		Jolly Jar donations for the Christmas Fair
Tues 11th Nov		Remembrance Day
Thur 13th Nov	9:15am	Y2 Assembly
Fri 14th Nov	All day	Children in Need House Event: Ramble
Tues 18th Nov		Year 1 trip to Brooklands
Week of 17th Nov		Buy your tokens for the Christmas Fair
Thurs 20th Nov		EYFS and KS1 Road Safety Trips
Thurs 20th Nov		MUFTI day in exchange for bringing a bottle for the
Friday 21st Nov		KS2 Road Safety Trips
Saturday 22nd Nov		Christmas Fair
Mon 24th Nov	9:15am	Prospective Parent tour
Mon 24th Nov	15:00 – 18:30 16:00 – 18:00	Parent Consultations
Tue 25th Nov	15:00 – 18:30 16:00 – 18:00	Parent Consultations
Mon 8th Dec	9:15 am	Year 2 and Year 3 Christmas Performance to Year 3 parents

Tue 9th Dec	9:15 am	Year 2 and Year 3 Christmas Performance to Year 2 parents
Wed 10th Dec	9:15 am	EYFS and Year 1 Christmas Performance to Reception parents
Thur 11th Dec	9:15 am	EYFS and Year 1 Christmas Performance to Year 1 parents
Tues 16th Dec	10am	Phase 3 rehearsals at the Church
Wed 17th Dec		Christmas Lunch and KS2 Party afternoon – party wear or Christmas jumper
Thurs 18th Dec	10am	Phase 3 Carol Concert at the Church
Thurs 18th Dec		EYFS and KS1 Party afternoon – party wear or Christmas jumper
Fri 19th Dec	am	Christmas Panto for the children
Fri 19th Dec	1:30pm	Break up for Christmas Holidays

SPRING TERM 2026		
Date	Time	Event
Mon 05.01	8:35am	Children return to school
Wed 07.01	9:15am	Prospective Parent Tour
Fri 09.01	Year Group newsletters out to parents	
Mon 12.01	Spinnaker Workshop Year 4 all day	
Mon 19.01	9:00am	Parent workshop on self-regulation strategies for children
Mon 19.01 – 30.01	Year 4 swimming starts for 2 weeks	
Tues 30.01	6pm	Friends Quiz Night
Mon 02.02	Pm Year 5 and 6 Football Tournament	
Mon 02.02	Year 6 Heart Dissection	
w/c Mon 09.02	Careers Week	
Fri 13.02	After school	Krispy Kreme Donut Sale
	Half term – 16th – 20th	
w/c Mon 23.02	Daily	Friends Event: Book Swap
Wed 25.02	2:15pm	KS2 Parents Maths Workshop and Information Session
Thu 26.02	9:15am	Y5 Assembly
Thu 26.02	Pm	Year 5 and 6 Tag Rugby Festival
Mon 02.03.26	9am	SEND coffee morning
w/c 02.03	Book Week	
Thur 05.03	World Book Day including Friends' Book Sale (we are not dressing up this year)	
w/c Mon 09.03 – Fri 13.03	Bikesability for Year 4	
Mon 16.03 & Tues 17.03	Pm	Reception Parent Consultations

Fri 20.03	Easter Discos	
Mon 23.03	All day	Dress Rehearsal for Music Festival (Glee) at Epsom Playhouse
Mon 23.03	Open Classrooms 2:45 – 3:45pm	
Tues 24.03	Eve	Choir attending Dorking Halls Music Festival
Tues 24.03 and Wed 25.03	Eve	Music Festival (Glee) at Epsom Playhouse
Wed 25.03	Reports out to parents (years 1 – 6)	
Fri 27.03	Break up at 1:30pm	

Privacy Notice:

We collect and use personal information about pupils in accordance with the UK General Data Protection Regulation (UK GDPR), section 537A of the Education Act 1996 and section 83 of the Children Act 1989.

Please [click here](https://www.southfield-park.surrey.sch.uk/parents/gdpr) to go to see the full information in our Privacy Notice for Parents, Carers and Pupils which can be found on our website under the Parents / GDPR

<https://www.southfield-park.surrey.sch.uk/parents/gdpr>



ARE YOU STILL FINALISING YOUR CHILD'S RECEPTION PLACE FOR SEPTEMBER 2025?

We have a handful of September 2025 Reception places remaining.

We understand choosing the right school is a big decision. If you've accepted a Reception place elsewhere but are having second thoughts, it's not too late to make a change.

Our nurturing environment and individual attention mean your child will be known, valued, and inspired every day.

Whether you're newly considering us or rethinking your current place, we would love to welcome you into our community.

**CONTACT US TO BOOK
A TOUR!**



www.southfield-park.surrey.sch.uk



info@southfield-park.surrey.sch.uk



Southfield Park Primary School, Long Grove Road, Epsom KT19 8TF



Family Wellbeing open morning

Epsom Downs Family Centre

Join YMCA East Surrey's Family Wellbeing Service and Reigate and Banstead Family Centre Team to find out more about YMCA's services offered to families in the local area.

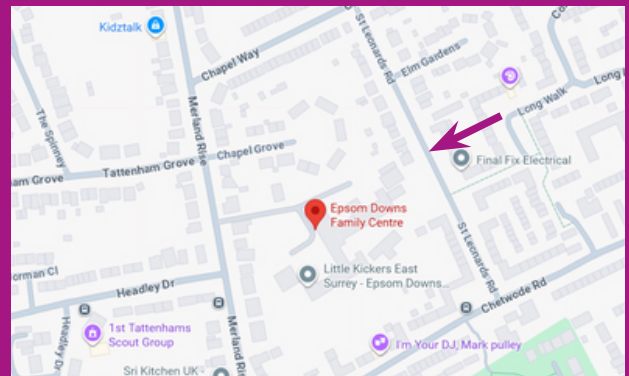
Family Support Workers and Family Wellbeing Coordinators will be available to provide general advice and guidance to parents/carers, as well as signpost to other services and take direct referrals for supporting the emotional wellbeing and mental health needs of your child or young person.

Wednesday 3 December 2025

08:30-10:30

YMCA Epsom Downs Family Centre,
St Leonards Road, Epsom Downs,
Surrey, KT18 5RJ

*Please enter via the St Leonards Road
entrance.*



Hot drinks and biscuits will be provided. Parents/carers can drop in at any time. No need to sign up.

For more information, please get in touch:

Family Centres

Email: reigatebansteadfamilycentre@ymcaeast Surrey.org.uk

Family Wellbeing Service

Email: communitywellbeingteam@ymcaeast Surrey.org.uk

www.ymcaeast Surrey.org.uk    YMCAEastSurrey

Registered charity no:1075028

Registered office: YMCA East Surrey, Princes Road, Redhill, RH1 6JJ

WARM



FREE

WEDNESDAYS

Join us this winter

- Hot drinks
- Family afterschool club
- Hot soup
- Help with energy bills
- Evening meal
- Friendship and chat

Simply drop in, no booking required



FREE



Wednesdays

9am-2pm • 3.30pm-6pm

From 5th November until 25th March

Epsom Methodist Church,
11-13 Ashley Rd, Epsom KT18 5AQ

WINTER FESTIVAL 2025

*Add some sparkle to your season –
family fun and festive magic*

Saturday 6 December

1pm - 6pm

Tadworth Court

Surrey KT20 5RU

Visit Santa, get crafting,
browse our market, enjoy tasty
treats and more, at our family
Christmas festival

✉ thechildrenstrust.org.uk/winter-festival

📧 events@thechildrenstrust.org.uk



FR Registered with
FUNDRAISING
REGULATOR

The Children's Trust, Tadworth Court, Tadworth, Surrey KT20 5RU
Registered charity number 288018. TCT_2260/10/25

penta
consulting


The Children's Trust
For children with brain injury

