

JANUARY 16TH 2026

SOUTHFIELD PARK

NEWSLETTER



Dear families

In a week where Reception travelled into space, Year 3 explored The Tin Forest and Year 5 stepped back in time to the workhouse, it is clear that high-quality texts continue to inspire learning across our school. Members of the Senior Leadership Team have spent time in classrooms this week, celebrating the many successes of our staff and pupils, while also identifying opportunities to continue to improve our practice.

On **Monday 19th January**, Mindworks will be hosting a **parent coffee morning** focused on emotional regulation. You are very welcome to join us in school from **9.00-10.30am**, where Gemma Gaye and Clare Taylor will be sharing advice and strategies to support children's emotional wellbeing.

Another key date for your diaries is the **Friends' Quiz Night on Friday 30th January** – read on for further details.

Best wishes for a lovely weekend,

Sally Smith

Dates for your diary...

Mon 19th Jan

- Parent Workshop on self-regulation strategies for children - 9 am

Mon 19th - 30th Jan

- Year 4 swimming starts for 2 weeks

Fri 30th Jan

- Friends Quiz Night

Mon 2nd Feb

- Year 5 & 6 Football Tournament - PM
- Year 6 Heart Dissection

Mon 9th - Fri 13th Feb

- Careers Week

Fri 13th Feb

- Krispy Kreme Donut Sale - After School
- Break up for Half Term Holidays



- **Mindworks Workshop – Monday 19th January**

You are warmly invited to join us for a coffee morning at Southfield Park Primary School on **Monday 19th January from 9.00-10.30am.**

Gemma Gaye and Clare Taylor from the Epsom School-Based Needs Team will be talking about ways to support your child in managing their emotions. There will also be opportunities to discuss emotional wellbeing and to learn practical tips and strategies.

If possible, please let the school office know if you are planning to attend, although you are very welcome to drop in on the day.

- **Friends' Quiz Night – Friday 30th January**

After last year's sell-out success, the Friends' Quiz Night returns on **Friday 30th January.** Quiz Master Tony is back by popular demand and promises another fun-filled evening with a variety of questions and challenges.

This is an **adults-only event**, with teams of up to six people. Tickets are now available via pta-events.co.uk/friendsofsouthfieldpark by scanning the QR code.

The staff promise to try not to win this year!



- **Year 4 Swimming**

Year 4 – please remember your swimming kits!

Our **two-week swimming programme** begins on **Monday.**



- **Spaces Still Available: Junior Arts & Crafts Year 3-6**

Our Junior Arts and Crafts Club has been busy creating these beautiful glass silhouette nightlights, and the results are simply magical!

There are still a limited number of spaces available for Junior Arts and Craft, held on Wednesday afternoons 3.20pm - 4.20pm

If you would like to secure a place please register via TUCASI or contact the office as soon as possible.

● Uniform Expectations

Please support us by ensuring that your child comes to school wearing the correct uniform. When uniform expectations are not met, it can start the day on the wrong foot for children.

Our uniform policy helps to remove difficult clothing choices, promotes equality, and fosters a sense of belonging. We encourage children to feel proud of their uniform. While we are mindful that some children have agreed adjustments in place, families will be contacted if expectations are not met.

Reception & Key Stage 1 Uniform:

- Southfield Park round-neck sweatshirt or cardigan
- Grey trousers, skirt or pinafore dress (or purple/white gingham dress in summer)
- White polo shirt (plain or with logo)
- Black shoes
- Grey or white socks / grey tights
- Book bag or backpack

Key Stage 2 Uniform:

- Southfield Park V-neck sweatshirt or cardigan
- School tie
- Grey trousers, skirt or pinafore dress (or purple/white gingham dress in summer)
- Plain white shirt
- Black shoes
- Grey or white socks / grey tights
- Backpack

PE Kit (All Children)

- Blue PE shorts
- White t-shirt (plain or with logo)
- Plimsolls or trainers
- PE bag with logo

Optional Items

- Reversible fleece jacket with logo
- Fleece with logo
- Baseball cap with logo
- Book bag or backpack with logo



Branded uniform is available from www.schoolwearinc.co.uk.

Non-branded items may be purchased from high street retailers, and families are encouraged to shop around for best value.

We also support sustainability through **regular pre-loved uniform sales**, kindly organised by the Friends of the School.

Jewellery is not permitted except for watches and small stud earrings (worn at the owner's risk). Make-up and nail varnish are not allowed. Hair should not cover children's eyes, and long hair should be tied back.

Please ensure **all items are clearly named**, as this greatly increases the chance of lost items being returned. Unnamed items may be disposed of sustainably or added to pre-loved sales.

If you need any support with uniform, please contact the school office.

● **Attendance & Fixed Penalty Notices**

Amount Payable for a Penalty Notice and Consequences for repeat unauthorised absences:

1. If you have not incurred a penalty notice relating to this child/children in a rolling 3 year period since 19 August 2024, then the penalty notice will be charged at the rate of £160.00, per parent/carer per child, if paid within 28 days. This will be reduced to £80.00 if paid within 21 days of receipt of the notice. Failure to pay the Penalty Notice will result in Surrey County Council considering legal proceedings against you in the Magistrates Court.
2. If you have incurred a penalty notice relating to this child/children since 19 August 2024, the rolling 3 year period will be activated from the date of the first penalty notice and the second penalty notice will be charged at the flat rate of £160.00, per parent/carer per child, if paid within 28 days. There will be no reduction for payment within 21 days. Failure to pay the Penalty Notice will result in Surrey County Council considering legal proceedings against you in the Magistrates Court.
3. If you have incurred 2 penalty notices relating to this child/children in the rolling 3 year period since the first penalty notice was issued, then you will NOT receive a third penalty notice – Surrey County Council will have no option but to consider a prosecution, per parent/carer per child, in the Magistrates Court under s 444 Education Act 1996. Surrey County Council is not responsible for authorising pupil absence and therefore cannot withdraw any Penalty Notice requests without the written permission of the Headteacher.

- **Breaking News: Creative Arts Week Returns**

Creative Arts Week will take place during the week beginning 22nd June. This much-loved event happens every two years and is always a highlight for children, families and staff.

During the week, we step away from the usual timetable to immerse ourselves in the creative arts, welcoming visiting professionals and running workshops ranging from African dance and opera to textiles, CAD, cake decorating and more. Staff also share their own skills and passions across the school.

Planning is already underway, and we are delighted that the Friends will be supporting us with funding so we can be ambitious for our children.



Can you help?

Do you work in a creative industry, have a creative hobby, or know someone who does? Do you have links with local arts groups? If so, please contact the school office at info@southfield-park.surrey.sch.uk.

- **Job Opportunity - Midday Meal Supervisor**

We currently have an exciting job opportunity available at our school. If you—or someone you know—are looking to make a difference in a warm and welcoming school environment, take a look at our current vacancies:

- Midday Meal Supervisor

If you're interested or would like more information, please use the QR code or visit our school website. We'd love to hear from you!



The Ultimate Guide to Elves and Sprites

Since returning to school, Year 4 have been using 'The Ultimate Guide to Elves and Sprites' to inspire us to create our own elf or sprite and write a non-chronological report.

Our reports are packed with information describing not only their appearance, habitat and behaviour but also fascinating facts you would never have imagined possible! As we have been writing, we have been focusing on our use of multi-clause sentences, fronted adverbials and precise language to really inform our readers.

Below is just a small selection of our work to welcome you to this magical world of fantasy creatures....



Animal Sprit Habitat

Where can you spot an animal sprite? Animal sprites spend time with wild animals in the woods. You may spot an animal sprite doing lots of things like riding on larger animals' backs, playing card games or flying with birds. Occasionally, they visit gardens and small villages for a trip or holiday.

Azra

Sun Sprite Habitat

In spring, the sun sprite sleeps in bunches of dry orange leaves and makes it its home for a few weeks. When summer comes, sun sprites like hot countries like Barbados, Japan and Saudi Arabia. If ocean water hits the sun sprite, it will go back to the leaves. During autumn, sun sprites dig holes in hills to get themselves warm and run in circles.

Otis

Oxygen Elf Habitat

The oxygen elf's habitat is the sky because it floats around the whole world, giving oxygen to trees so trees can give oxygen to us. The oxygen elf also sleeps during daytime and wakes up at night at exactly 11p.m. so nobody can see it, but people do try to stay up to see it. Unfortunately, the oxygen elf is endangered because of us, so the oxygen elf normally gets hunted down by jets or planes because it lives in the sky. In the winter, the oxygen elf lives on land Harvey because it would get too cold, especially because it's up in the sky.

Harvey

The Lake Sprite

Have you ever imagined being splashed in a pool of water by a rare creature? If you have, you might even see a lake sprite! A lake sprite is known to attack many humans when disturbed. Most lake sprites use the sharpest water as boomerangs.

Appearance

Lake sprites wings are made of water. Their boots are made of lotus flower petals and lily pads as they glide elegantly on the surface of the luminous water. Surprisingly, lake sprites can race against swordfish in terms of speed. On its face, lake sprites eyes are fluorescent like fire balls. When excited, it's temperature rises to boiling water. Filled with curiosity, some of its clothes may be damaged because they are too excited and did hilarious things to themselves. Lake sprites legs and arms are invisible because it is made of water. Its size is about that of a miniature frog, as a result it is hard to locate.

Serene

Tree Elf's Habitat

As the tree elf likes trees, he can be found living in a tall tree house. He hates being seen as he likes being secret, so he doesn't leave his leafy home in the day. As the tree elf loves having fun, he has a spiral, long slide around his house to get to work quickly. Since this amazing species has become friends with dragonflies, they have been found riding them. Some elf homes even have a runway for dragonflies in their garden!

Ashton

Bumble Bee Habitat

As bumble bee sprites like honey, they can be found living in meadows near bee hives. In the massive flower field where they make their home, you will find the bee hive and the bumble bee sprites making honey and honeycombs to eat. In the meadow, the flowers glitter in the sun making it a great place to live.

Reyne

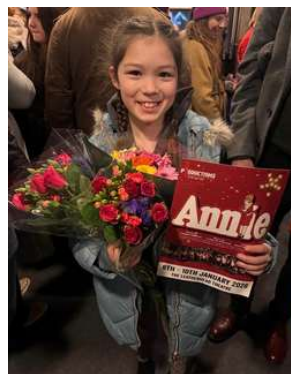




Ella competed in her first dance competition last Sunday for Charmille Dance Collective at Bright Star Dance Festival. Her fabulous junior dance team performed two group dances securing a Gold and Silver trophy. Ella danced as an Elf and as a Heffalump in Winnie the Pooh alongside her team.



- Millie performed in Annie the musical in the Leatherhead Theatre last weekend. It was a production by a national theatre group called Rare Productions, and she was one of the orphans in the ensemble. She got the role via an open audition last July and the rehearsal ran from early October for 10 weeks. She performed in the two main shows last Thursday and Saturday evenings, both of which were very well received.





Stars of the week

RC

Star of the week: **Penelope & Theo**

Year 1 HM

Star of the week: **Maiol**

Year 2 GR

Star of the week: **Ernest**

Year 3F

Star of the week: **Noah**

Y4 K

Star of the week: **Serene & Millie**

Year 5BS

Star of the week: **Piper**

Year 6N

Star of the week: **Liyana**

RF

Star of the week: **Alastair**

Year 1 CR

Star of the week: **Mathew**

Year 2D

Star of the week: **Emily**

Year 3A

Star of the week: **Louie**

Year 4J

Star of the week: **Otis**

Year 5S

Star of the week: **Aya**

Year 6C

Star of the week: **Malak**





Interesting fact:
There are over 14,000 Young Carers in Surrey

Contact Us



info@southfield-park.surrey.sch.uk



01372743104



www.southfield-park.surrey.sch.uk

Young Carer Leads:
Miss Radcliffe + Miss Ahmed
Roles: ELSA + HSLW
For anymore information please contact the school office, they will direct you to more support.



Young Carers
Could this be you?

A leaflet for young people caring for others

Stressed Kind
Tired Caring
Protective Responsible
Anxious



Could you be a Young Carer?

Young Carers are those under 18 that provide unpaid support to someone at home who has a long-term disability, mental health difficulties, problems with drugs and alcohol or are siblings of children with SEND needs. They carry out tasks and responsibilities which are additional to those appropriate for their age.

- What things might a Young Carer help with?
- Cooking and feeding
 - Housework
 - Shopping
 - Helping to give medicine (e.g. checking blood sugar levels)
 - Collecting prescriptions
 - Helping someone out of bed
 - Dressing
 - Looking after siblings
 - Emotional support
 - Budgeting and paying bills

Being a Young Carer can be very rewarding. Some positives may include:

- Feeling proud of challenges you overcome
- Building resilience
- Learning how to cook, clean, manage money and other skills
- Having a close relationship with family members

Our Aim

At SouthfieldPark we can support Young Carers by providing:

- Identifying Young Carer Leads in school: Miss Radcliffe + Miss Ahmed
- A safe space to talk and be listened to
- 1:1 support when needed
- Young Carers groups or activities
- Flexibility with homework, deadlines or attendance where appropriate
- Support during transitions and changes
- An awareness of Young Carers through lessons, assemblies and staff training.

Why it's important to tell us

- Being a Young Carer can affect learning, wellbeing and friendships
- You may be missing out on clubs, activities or time with friends
- It helps school understand your situation better
- We can make small changes that make a big difference
- Everything shared is treated with care and confidentiality.

Support for parents and carers:

- We can offer a listening ear and non-judgmental support
- Signposting to local services
- A whole-family approach to reduce pressure on children where possible.

If you think you may be a Young Carer please complete the slip below and return it to the school office or the ELSA room.

.....

Young Carers
Please return to the school office
Name: _____
Class: _____

Anxiety around ADHD

Free online workshop for parents and carers

The workshop can help you navigate:

- Understanding ADHD
- The links between ADHD and anxiety
- Strategies to help support you and your child
- Other support that is available



Tuesday 27 January 2026, 9.30am - 11.30am

Thursday 29 January 2026, 7.00pm - 9.00pm

Please indicate which session you would like to attend.

To book your place:

- Call Lesley on **020 4522 8701**
- Email **services@familylives.org.uk**
- Scan the QR code for our referral form



SCAN HERE

We build better family lives together

www.familylives.org.uk

JANUARY 16TH 2026

FRIENDS@SOUTHFIELD-PARK.SURREY.SCH.UK



News From The Friends



● Quiz Night tickets ON SALE via PTA-Events

Gather your teams for a fun-filled ADULTS ONLY event!!

- **7:30pm (for an 8pm start), FRIDAY 30th January**
- Bookings via **PTA-Events** (also available on the door)
- £5 per person
- Teams of up to 6 people
- **Bring Your Own Booze** / drinks and snacks
- Small bar available for top-ups!
- Mini games £1 per play!



● Other dates for your diary...

Monday 19 Jan - Friends' AGM at 8:30pm via **Teams** ✈️

Friday 30 Jan - Quiz Night (adults only)

Friday 13 Feb - Krispy Kreme donut sale

23-27 Feb - Book Donations for book swap

5 Mar - World Book Day Book Swap

20 Mar - Easter Disco (3 phases)

TBC - Pre-Loved Uniform Sale

TBC - Clothing Collection from The Little Recyclers (formerly Bag2School)

● Advertising Opportunity

Do you run your own business? Would you be interested in sponsoring one of our Quiz rounds for £20? In exchange we will promote your company on our socials, mention your company name during the Quiz Night and have your logo printed with the answer sheets. If you are interested or need more information please contact us on friends@southfield-park.surrey.sch.uk.

Spring Term 2026 - Key Dates

Date	Time	Event
Mon 05.01	8:35am	Children return to school
Wed 07.01	9:15am	Prospective Parent Tour
Fri 09.01	Year Group newsletters out to parents	
Mon 12.01	Spinnaker Workshop Year 4 all day	
Mon 19.01	9:00am	Parent workshop on self-regulation strategies for children
Mon 19.01 – 30.01	Year 4 swimming starts for 2 weeks	
Fri 30.01	6pm	Friends Quiz Night
Mon 02.02	Pm Year 5 and 6 Football Tournament	
Mon 02.02	Year 6 Heart Dissection	
w/c Mon 09.02	Careers Week	
Fri 13.02	After school	Krispy Kreme Donut Sale
	Half term – 16th – 20th	
w/c Mon 23.02	Daily	Friends Event: Book Swap
Wed 25.02	2:15pm	KS2 Parents Maths Workshop and Information Session
Thu 26.02	9:15am	Y5 Assembly
Thu 26.02	Pm	Year 5 and 6 Tag Rugby Festival
Mon 02.03	9am	SEND Coffee Morning
w/c 02.03	Book Week	
Thur 05.03	World Book Day including Friends' Book Sale (we are not dressing up this year)	
w/c Mon 09.03 – Fri 12.03	Bikeability for Year 4	
Mon 16.03 & Tues 17.03	Pm	Reception Parent Consultations
Fri 20.03	Easter Discos	
Mon 23.03	All day	Dress Rehearsal for Music Festival (Glee) at Epsom Playhouse
Mon 23.03	Open Classrooms 2:45 – 3:45pm	
Tues 24.03	Eve	Choir attending Dorking Halls Music Festival
Tues 24.03 and Wed 25.03	Eve	Music Festival (Glee) at Epsom Playhouse
Wed 25.03	Reports out to parents (years 1 – 6)	
Fri 27.03	Break up at 1:30pm	



Celebrating Performance
in Music and Drama

www.rrfestival.org

Registered charity no 1209178

Enter now!

Join us for Reigate and Redhill Festival: a fun and friendly celebration of music, speech and drama.

- For children and adult amateur musicians:
 - Brass, Choirs, Classical Guitar, Group Music, Harp & Clarsach, Piano & Organ, Strings, Vocal, Woodwind (inc. Recorders)
- Concerto Competition for musicians aged 20 and under
- Rock, Pop and Urban for soloists and groups, aged 10 to 19
- Speech and Drama for Reception to Year 13

See our online syllabus for details of over 250 competitive and non-competitive entry categories.

Festival dates:
28 April–22 May 2026

Entries from £5



Entries close: 25 February 2026

JANUARY 9TH 2026



Privacy Notice:

We collect and use personal information about pupils in accordance with the UK General Data Protection Regulation (UK GDPR), section 537A of the Education Act 1996 and section 83 of the Children Act 1989.

Please [click here](https://www.southfield-park.surrey.sch.uk/parents/gdpr) to go to see the full information in our Privacy Notice for Parents, Carers and Pupils which can be found on our website under the Parents / GDPR
<https://www.southfield-park.surrey.sch.uk/parents/gdpr>



**JFS Football Club
Boys & Girls
Thursdays**

3.20 - 4.20

(Year 1,2,3,4,5,6)

January 8th - March 26th

Price: £66.00



Sign up link and QR code below

<https://forms.gle/TYogHuQWmX4Jy9tR6>



Girls Football Club



JFS

Girls Only Football Club

Wednesdays

3.15 - 4.15

(Year 2,3,4,5,6)

January 7th - March 25th

Price: £66.00



Sign up link below

<https://forms.gle/qjrvwf56eRtmEWtv8>



NEW

After-School Club!

LAMDA

Screen Acting

(Years 2-6)

Tuesdays | 3:20-4:10 PM
Starting 9th September 2025

£10 per session
(50% off for siblings!)

Spaces limited to
16-17 students

Does your child love drama, storytelling, or being on camera?

Let their creativity soar at our exciting new **LAMDA Screen Acting Club** – where budding young performers **grow in confidence, communication, and imagination...** all while having fun!



Led by industry professionals, our sessions include:

- **Speech & Drama (LAMDA)**
Build vocal clarity, expression & confidence
- **Optional LAMDA exams** for recognized qualifications
- **Choose: 1-to-1 or new group-based LAMDA sessions**

★ **Also includes:**



Screen Acting

On-camera skills: timing, listening, presence

- ★ **Star in:** music videos, commercials, short films & more!
- ★ **Clear speaking & performance skills**

BOOK NOW – Limited spaces!

southfieldparklamda
gmail.com



3-week
paid
trials



FUN SPANISH CLUB

SOUTHFIELD PARK PRIMARY SCHOOL



Now
on
Monday

Spring term starts 12th Jan
Mon 3:10-4:10 for Rec-Y2
Mon 3:20-4:20 for Y3-Y6



10 weeks @ £10.25 child/week. Trials £30.75 (new only). 2% handling fee applies.

"The class is fun,
stimulating and they're
learning without even
realising."

Watch this video!
<https://youtu.be/EAmXoyfWfVc>

Weekly worksheets &
FREE access to games site
with 100s of online games
to play at home.

We teach Spanish using

- ✓ Music
- ✓ Games
- ✓ Let's pretend
- ✓ Storytelling
- ✓ Actions
- ... and more!



Enrol here:

<https://www.kidslingo.co.uk/area/spanish-classes-epsom-eshur-surbiton/>

✉ rachel.trew@kidslingo.co.uk

☎ 07355 488215



A Kidslingo franchise owned and operated under licence by KL RT LLP

Martial Arts School Club



Your child will...

- ✓ Gain Confidence
- ✓ Develop Discipline
- ✓ Learn Self-Defence

Special Joining Offer
2 weeks for £10

NO COMMITMENTS • TRY US WITH CONFIDENCE

Email: hello@london-tkd.co.uk

Call: 07553 065 214

Website: www.london-tkd.co.uk

WE ACCEPT CHILDCARE
VOUCHERS & OFFER
TAX-FREE CHILDCARE!

MEGA CAMPS

KIDS DAY ACTIVITY CAMPS

CHILDCARE FROM
8am - 6pm

AGES
4 - 14

FEBRUARY CAMP 2026

SAVE ££'s - EARLY BIRD OFFERS END 31ST JAN
MULTIPLE LOCATIONS THROUGHOUT ESSEX, SURREY & KENT



WALL CLIMBING



ANIMAL WORKSHOP



ARCHERY & AXE THROWING



2026
DATES
LAUNCHED

DIFFERENT MEGA ACTIVITIES, ARTS & CRAFTS 🧠 AND
SPORTS 🏀 AVAILABLE EACH DAY

MEGA FUN AT A LOCATION NEAR YOU!
CHECK WEBSITE FOR LOCATIONS AND DATES

Ofsted
Registered

BOOK ONLINE NOW!
WWW.MEGACAMPS.NET
OR CALL 0333 012 4378

ALL OUR
STAFF ARE





2026 CAMP DATES

FEBRUARY
16TH FEB - 20TH FEB



EASTER*
30TH MAR - 17TH APR

MAY
26TH MAY - 29TH MAY

SUMMER
21ST JUL - 28TH AUG

OCTOBER & CHRISTMAS DATES TBC

Visit: www.megacamps.net
for your locations exact dates & more details



NERF GAMES & LASER TAG



CAMP HOURS 9am-4pm
EXTENDED HOURS 8am-6pm

**NEW EXCITING ACTIVITIES
& STRUCTURE
TO BE ANNOUNCED
IN 2026**



ARTS & CRAFTS



INFLATABLE FUN

MAKING MEMORIES



TAKE ADVANTAGE OF OUR PRICE FREEZE
AND EARLY BIRD OFFERS!**

WWW.MEGACAMPS.NET

*DATES VARY DEPENDING ON LOCATION
** PRICE FREEZE UNTIL JAN 31ST 2026

DRAMA SINGING DANCE



Delivering fun and engaging performing arts classes
led by professional tutors since 1995

JIGSAW EPSOM

Glyn School
The Kingsway
Epsom, KT17 1NB

Saturday
mornings

3-18
years

TWO
WEEK TRIAL
AVAILABLE
BOOK NOW!

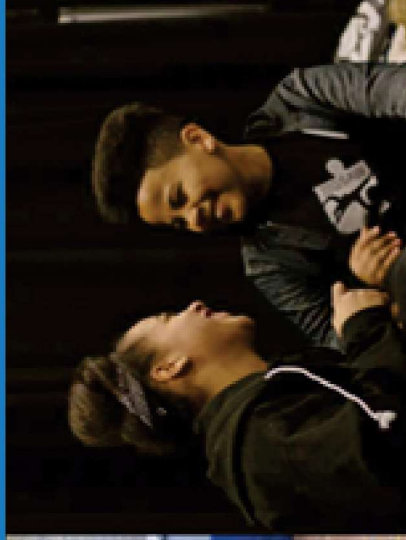
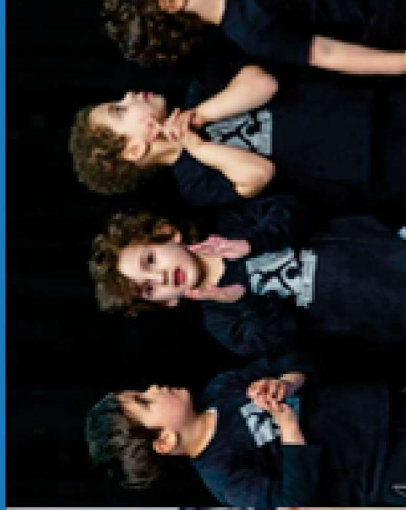


EST. 1995

T: 0203 8118636 W: jigsaw-arts.co.uk/epsom



DRAMA SINGING DANCE



Jigsaw has been providing high quality performing arts classes for more than 25 years, giving your child a place to belong!

The safety of our students is a priority, whilst maintaining a fun and engaging environment. All teachers are DBS checked.

Visit www.jigsaw-arts.co.uk/epsom for more information, or call **0203 8118636** to speak with a member of our team and book a two week trial today!



Like us on Facebook
@jigsawepsom



Follow us on Instagram
@jigsawepsom



Contact us via WhatsApp
0203 8118636

EPSOM

Saturday mornings

Glyn School
The Kingsway
Epsom, KT17 1NB

3-4 year olds:

9.30am - 11.00am
10.30am - 12.00pm
11.30am - 1.00pm

5-6 year olds:

9.30am - 11.00am
11.30am - 1.00pm

7-18 year olds:

10.00am - 1.00pm



EST. 1995

T: 0203 8118636 E: epsom@jigsaw-arts.co.uk W: jigsaw-arts.co.uk



Rosebery School PRESENTS

SIX



WEDNESDAY 28 JANUARY

7.30 PM

THURSDAY 29 JANUARY

7.30 PM

FRIDAY 30 JANUARY

4.30 PM

7.30 PM

ADULTS
£16.50
CHILDREN
£14

TEEN EDITION

AT THE LEATHERHEAD THEATRE

SIX TEEN EDITION by Toby Marlow and Lucy Moss. This amateur production of SIX TEEN EDITION is presented by special arrangement with Concord Theatricals at www.concordtheatricals.co.uk. SIX THE MUSICAL, SIX THE MUSICAL: THE TEEN EDITION and SIX purple and gold logos are trade marks and registered trademarks of E4 - Wynn Ltd., used under license, all rights reserved.

WARM



FREE

WEDNESDAYS

Join us this winter

- Hot drinks
- Family afterschool club
- Hot soup
- Help with energy bills
- Evening meal
- Friendship and chat

Simply drop in, no booking required



FREE



Wednesdays

9am-2pm • 3.30pm-6pm

From 5th November until 25th March

Epsom Methodist Church,

11-13 Ashley Rd, Epsom KT18 5AQ